

AGENDA FOR

RADCLIFFE TOWNSHIP FORUM

Contact:: Keren Murphy
Direct Line: 0161 2535130
E-mail: k.m.murphy@bury.gov.uk
Web Site: www.bury.gov.uk

To: All Members of Radcliffe Township Forum

Councillors : D Bailey (Vice-Chair), M Bailey, S Briggs, P Bury, A Cummings, T Isherwood, J Lewis, N Parnell, R Shori, Gill Stainthorpe, Colin Jones (Chair), Colette Jones and Roy Vevers

Dear Member/Colleague

Radcliffe Township Forum

You are invited to attend a meeting of the Radcliffe Township Forum which will be held as follows:-

Date:	Tuesday, 1 July 2014
Place:	Radcliffe Civic Suite, Thomas St, Radcliffe
Time:	6.00 pm
Briefing Facilities:	If Opposition Members and Co-opted Members require briefing on any particular item on the Agenda, the appropriate Director/Senior Officer originating the related report should be contacted.
Notes:	

AGENDA

1 APOLOGIES FOR ABSENCE

2 DECLARATIONS OF INTEREST

Members of Radcliffe Township Forum are asked to consider whether they have an interest in any of the matters on the Agenda and, if so, to formally declare that interest.

3 APPOINTMENT OF CHAIR/VICE-CHAIR *(Pages 1 - 2)*

4 MINUTES OF THE LAST MEETING *(Pages 3 - 10)*

Minutes of the last meeting held on 26 February, 2014.

5 LOCAL POLICE UPDATE

6 RADCLIFFE TOWNSHIP FORUM ACTION PLAN - PERFORMANCE REPORT 2013/14 *(Pages 11 - 38)*

Members are invited to take part in round-table discussions on the key priorities contained within the Action Plan for 2013/14.

7 COMMUNITY FUNDING REPORT *(Pages 39 - 42)*

A report from the Programme Support Officer is attached, for information.

8 ADVISORY GROUP UPDATE

9 OPEN FORUM

Questions are invited from members of the public present at the meeting about the work or performance of the Council or the Council's services relevant to the Radcliffe area.

Approximately 30 minutes will be set aside for Open Forum, if required.

10 URGENT BUSINESS

Any other business which, by reason of special circumstances, the Chair agrees may be considered as a matter of urgency.

RADCLIFFE TOWNSHIP FORUM

NOMINATIONS FOR CHAIR/VICE-CHAIR

Nominations for the Chair and Vice-Chair of the Forum are invited at this meeting.

Any person nominated needs to be present and seconded in order for the nomination to stand.

If there is more than one nomination then the matter will be determined by vote.

The positions of Chair and Vice-Chair may be filled by either a core member or an Advisory Group Member.

If the position of Chair is taken by an Advisory Group Member, the position of Vice-Chair must be taken by a core member. A core member may take the position of Chair or Vice-Chair

This page is intentionally left blank

Minutes of: RADCLIFFE TOWNSHIP FORUM

Date of Meeting: 26 February 2014

Venue: Radcliffe Civic Suite, Thomas St, Radcliffe

Present:

Councillors: Colin Jones (In the Chair)
Councillors D Bailey, M Bailey, P Bury, A J Cummings, J Lewis, N Parnell and R Shori

Advisory Group Representatives: Colette Jones – Friends of Close Park
David Lewis – Chapelfield Village Association
Gill Stainthorpe – Withins Community Association

Public attendance: 12 members of the public were in attendance

Apologies for absence: Councillors S Briggs and A Isherwood
Roy Vevers – Radcliffe Carnival

RTF.800 DECLARATIONS OF INTEREST

Councillors Daisy and Matt Bailey declared a personal interest in respect of Agenda Item 5 – “Healthier Together Presentation – NHS Bury Clinical Commissioning Group” as they are both employed by BARDOC, who provide services commissioned by Bury Clinical Commissioning Group (CCG).

RTF.801 MINUTES

It was agreed:

That the Minutes of the last meeting of the Township Forum held on 9 January, 2014 be approved as a correct record and signed by the Chair.

RTF.802 LOCAL POLICE UPDATE

Inspector Mark Kenny provided an update on local police issues since the last meeting of the Township Forum:-

- Overall crime was continuing to fall in Radcliffe
- Risk areas were house burglary and shed break-ins
- The police were operating a number of initiatives to tackle crime in South Bury, including more officers operating at key times
- The local police were continuing to focus on tackling Anti-Social Behaviour

The Chair invited questions, comments and representations from members of the public present at the meeting:-

- An Ainsworth resident commented that they would like to see a visible police presence in Ainsworth.
Inspector Kenny explained that pressures on finite resources

- dictated the police presence in a particular area.
- Cllr Matt Bailey raised concerns regarding the accident hot spot at the junction of Cross Lane and Bury St caused by speeding drivers. Inspector Kenny thanked Cllr Bailey for this report and gave an assurance that this would be flagged up by the local police.
 - A member of the public asked for a breakdown of crime statistics in Radcliffe to be provided at future meetings of the Township Forum. Inspector Kenny was also asked to provide further information regarding data protection.

It was agreed:

That the information provided be noted and Inspector Kenny was thanked for his attendance at the meeting.

RTF.803 HEALTHIER TOGETHER – PRESENTATION BY NHS BURY CLINICAL COMMISSIONING GROUP

Dr Kiran Patel, Chair of NHS Bury Clinical Commissioning Group (CCG) attended the meeting in order to give a presentation on the Healthier Together initiative aimed at transforming health and care services in Bury. Dr Peter Thomas and Doug Galvin, Patient Cabinet Member of NHS Bury's CCG were also in attendance to answer any questions from members of the Township Forum and from members of the public present.

The presentation covered the following key areas:-

- Provided background information on Bury CCG
- Detailed the Healthier Together initiative's aims and objectives
- Detailed the different organisations responsible for the governance of the Healthier Together initiative
- Provided information on the In-Hospital Reconfiguration Programme
- Explained why the changes in managing and delivering health and care services in Bury needed to be introduced
- Explained the future vision for local and specialised health care services
- Detailed the future model of care for single services
- Explained how the changes would be achieved via a two year operating and five year strategic planning programme

The Chair invited questions, comments and representations from members of the Township Forum and from members of the public present at the meeting:-

- A question from a member of the public regarding how the key partner organisations would best communicate with each other/share information?
It was reported that 90% of all communication was now done electronically. NHS Bury's IT department was one of the most efficient in the country. NHS Bury were currently working on a project to ensure that all communication between departments would be done electronically.

- A further question on how the District Nurse teams in Bury communicate/share information?
The meeting was informed that the District Nurse teams in Bury were now using tablet computers to communicate/share data.
- Colette Jones commented on her recent attendance at a conference on the Healthier Together initiative and, in particular, on one local North West NHS CCG who were including an emphasis on working on the prevention agenda, an example being working with local Park and recreation services.
Dr Patel informed the meeting that NHS Bury would be looking into this issue as it was recognised that integrated care was not just about health and social care services.
- A question from a member of the public regarding the timescales involved?
It was reported that a 90 day consultation period would begin around June/July 2014. The local programme had already begun through the Healthier Radcliffe Pilot scheme which had been implemented in December 2013. The vision for Hospital services would be in approximately 18 months time.
- A question from a member of the public about the origins of the initiative?
The meeting was informed that this initiative had been clinically driven by Hospital based Consultants.
- Doug Galvin, CCG Patient Cabinet Member introduced himself to the meeting and explained his voluntary role on the CCG. Mr Galvin also commented on the importance of the public being aware of the changes and how they would benefit the wider community.
- Gill Stainthorpe expressed some concerns regarding the pooling of expertise in hospitals and how this can create problems for the relatives of patients particularly in relation to patient/relative transport. Cllr Bury informed the meeting of his involvement, as Chair of the Health Scrutiny Committee, in a working group looking at public transport issues. Cllr Bury commented that it may be difficult in some areas to gain support from members of the public on the reconfiguration of hospital services.
- A question from a member of the public seeking clarification if the Radcliffe Pilot had led to a decrease in the number of local A & E visits?
It was reported that, although this information had not yet been fully evaluated, the number of patients utilising the service had increased.
- A comment from a member of the public on the importance of ensuring that the public were made aware of the next stage in the Radcliffe Pilot scheme.
The meeting was informed that the next stage of the scheme would receive a higher public profile in the area.

It was agreed:

That Dr Patel, Mr Galvin and Dr Peter Thomas be thanked for their contribution to the meeting and that the information be noted.

RTF.804 JOINT STRATEGIC NEEDS ASSESSMENT

Lesley Jones, Director of Public Health gave a presentation on the Joint Strategic Needs Assessment (JSNA) being undertaken by NHS Bury CCG which is intended to provide an assessment of local health and social care needs now and in to the future. It is hoped that the JSNA would be used to inform and guide commissioning of health, well-being and social care services within Bury. The presentation provided detailed statistical analysis of the health and wellbeing status of Bury communities on a ward by ward basis. The data showed where the inequalities in Bury exist and it was explained that this information would help to highlight key findings, identify changes that have occurred and what these changes mean to Bury and help to identify areas for further analysis and exploration.

Some of the priorities identified following the local needs assessment exercise were detailed as follows:-

- Tackling alcohol related health problems
- Promoting independence at home for older people where possible
- Reducing levels of smoking and smoking prevention
- Promoting physical activity
- Better understanding of the needs of vulnerable people
- Halting the increasing rates of childhood obesity and reducing obesity in adults
- Understanding and addressing health inequalities
- Tackling cancer and circulatory disease
- Anticipating rising demand and need
- Focus on most deprived areas
- Focus on mental and emotional wellbeing

The meeting was informed that the Consultation for the JSNA would run from 18 February to 31 March, 2014. The key questions forming the consultation would ask local residents if the priorities identified were the right ones?, if there were other issues that would benefit from further exploration and if so, why are these important? Residents are asked to respond via Bury Council's website at www.bury.gov.uk or via the leaflets being distributed throughout the community. At the end of the Consultation process, a report would be compiled of all responses received and the Health & Wellbeing Board would consider the findings and implications for the Health and Wellbeing Strategy and relevant commissioning plans.

The Chair invited questions, comments and representations from members of the public present at the meeting:-

- Cllr Parnell questioned the use of beguiling statistics and data?
- A member of the public questioned the lower rates of early access to maternity care?
It was reported that the time pregnant patients present to their GP had proved the major factor behind this data.
- Cllr Parnell raised concerns regarding the pressures faced by an increasing ageing population and an NHS facing massive cuts?
The meeting was informed that the NHS were developing focused programmes with short and long term health impacts, for example

on fall prevention, affordable warmth and loneliness. These programmes would build upon work already done.

- David Lewis commented that some of the issues around life expectancy were linked to lifestyle choices and that the comprehensive information presented were powerful facts to get across to members of the public. In response, Lesley Jones explained the link between deprivation and vulnerability and healthcare professionals could work with people to help them deal with these issues and improve health outcomes.
- Cllr Shori commented on the need to look at other contributing factors such as health, education, housing and empowering people to make positive lifestyle choices. Cllr Shori also commented on the need to address some of the social issues faced by the elderly. Dr Peter Thomas explained that the gap was narrowing in terms of deprivation and health issues. Dr Thomas also commented on the need to consult with the elderly population and of the contribution the elderly can make to society as a whole.
- Cllr M Bailey asked for clarification regarding the teenage pregnancy data, whether or not the figures related to the number of under-age pregnant teenagers or those between the ages of 16-18? It was reported that the indicator was 13 to 18 year olds. The number of teenage pregnancies had decreased in Bury but it was important to consider the issues around the perceptions of young people and the statistics presented.
- A question relating to e-cigarettes and their potential to cause damage? It was reported that although e-cigarettes produce water vapour, not smoke, the NHS would not endorse these products as they were currently unregulated.
- § Gill Stainthorpe asked if there was a correlation between young people and inactivity and children from low income families? It was explained that part of the reason for low levels of inactivity in children and young people was the fact that children did not play out as much as they used, the fear of crime played a part in that. Activity based programmes needed to be affordable and easily accessible.

It was agreed:

That Lesley Jones be thanked for her presentation and that the information provided be noted.

RTF.805 RADCLIFFE TOWNSHIP FORUM – TOWNSHIP PLAN 2012-15

Christine Maksymowski, Township Co-ordinator submitted the Radcliffe Township Plan 2012-15, which outlined how the Forum would continue to make progress towards the vision for the Township in order to promote better outcomes for the social, health, economic and environmental well-being of the people within the Radcliffe Community. The meeting was informed of the following update, since the last meeting of the Township Forum:-

- The police partnerships set up to help reduce Anti-Social Behaviour were continuing to work well;

Document Pack Page 8

Radcliffe Township Forum, 26 February, 2014

- Tackling Childhood Obesity – looking at work around this issue as part of the Children’s Centre Action Plan;
- “I Will if You Will” initiative had been introduced in Radcliffe;
- Work currently being done on the Township Plan Performance Report. This will be ready in draft form to be considered at the next scheduled meeting of the Township Forum in July.

It was agreed:

That this report be noted.

RTF.806 COMMUNITY FUNDING REPORT

A copy of the Community Funding report for Radcliffe was submitted, setting out details of the funding allocations to date in support of the work of local voluntary and community groups. Christine Maksymowski reported on the funding available and informed the meeting that any monies left in the budget would be lost and not carried forward to next year’s budget allocation. Please contact Liz Saunders, Programme Support Officer for further information.

It was agreed:

That the report be noted.

RTF.807 ADVISORY GROUP MEMBERS - UPDATE

Colette Jones provided an update on the work of Friends of Close Park since the last meeting of the Forum, as follows:-

- RSPCA Dog Event would be taking place on 7 September, 2014.
- Bury Hospice Party in the Park event would be held on 5 July, 2014.
- The Racing Day event was scheduled to take place on 5 May, 2014.
- Recycle Radcliffe event would be held on 23 March, 2014.
- The Friends had submitted a bid for story chairs to raise money for the forest schools
- Wishing Well project – plans for the wishing stone in the park in support of the Children’s Hospice – application forms were available to make donations
- Mums & Kids weekly gym sessions
- Old Cross had been located, in Bury Library – ideas were invited as to the best place for the Old Cross to be sited in Radcliffe
- The Radcliffe Tower Dig reports would soon be available via email
- Bury College would like to exhibit 200 works of Art by students. They had approached Bury Art Gallery who had refused the request to exhibit the artwork. Please could local Councillors support the College.

It was agreed:

That the information provided be noted.

RTF.808 OPEN FORUM

The Chair invited questions, comments and representations from members of the public present at the meeting. Questions were asked and comments made on the issues detailed below. The Township Forum Co-ordinator undertook to obtain a reply to matters which could not be dealt with at the meeting.

- Cllr Daisy Bailey asked if the Open Forum item could be considered earlier on in the meeting to allow members of the public who were unable to stay for the full duration of the meeting the opportunity to have their say. The Chair gave an assurance that this would be considered at the Chair's Briefing session prior to the next Township Forum meeting.
- An update was requested in relation to Radcliffe Baths. Cllr Lewis informed the meeting that the pool will remain closed pending the report from structural engineers. The teaching pool and gym are still open to the public. There is no definitive timetable or cost available for the repairs to the building.
- A member of the Carnival Committee reported that a community workshop in support of the Carnival would be held on 7 March from 6.30 pm – 9 pm. Representatives from Bury Adult Learning would be in attendance to support the workshop activities. All were welcome to attend in support of the Carnival. Venue to be confirmed.
- A record of concerns/questions from Mr Farnworth, a local resident relating to traffic issues on Bury/Bolton Road were forwarded to the Chair, Colin Jones. It was reported that Cllrs Parnell and Lewis would be dealing with the issues raised, on behalf of Mr Farnworth.

Chair COLIN JONES

(Note: The meeting started at 6.00 pm and ended at 8.20 pm)

This page is intentionally left blank

Radcliffe Township Action Plan

2013-14:
Performance Report

Section	Page	What it contains?
Introduction	3	A background to the Township Action Plan and Performance Report
Improved Employment Opportunities	4	An overview of successes achieved for this theme in 2013/14
Improved Community Safety	5	An overview of successes achieved for this theme in 2013/14
Improved Health & Wellbeing	6	An overview of successes achieved for this theme in 2013/14
Improved Educational Attainment/Learning Opportunities	7	An overview of successes achieved for this theme in 2013/14
Improved Public Transport Links	8	An overview of successes achieved for this theme in 2013/14
Improved Community Pride & Belonging	9	An overview of successes achieved for this theme in 2013/14
Summary & Conclusion	10-11	A breakdown of the progress made by Radcliffe Township Forum over the course of 2013/14

INTRODUCTION

- 1.1 This report outlines the performance of the Radcliffe Township Forum and the progress on each of the themes contained within the Radcliffe Township Action Plan for 2013-14. The information provided has been gathered from a number of qualitative and quantitative sources including Bury Insight, Index of Multiple Deprivation, Area Profile Data and various local community intelligences.
- 1.2 There are currently 6 key thematic priorities contained within the Radcliffe Township Action Plan for 2013/14:
- Improved Employment Opportunities
 - Improved Community Safety
 - Improved Health and Wellbeing
 - Improved Educational Attainment/Learning Opportunities
 - Improved Public Transport Links
 - Improved Community Pride and Belonging

This report provides a summary of the overall performance for each of the themes and the projects which contribute to their delivery.

- 1.3 Where possible both quantitative and qualitative data sources have been used to demonstrate the progress that has been made by the Township Forum on each theme.
- 1.4 The detail of this performance report can be viewed on the Township Forum web pages at www.bury.gov.uk/townshipforums. If you require copies of the report please contact Christine Maksymowski on 0161 253 7941.

IMPROVED EMPLOYMENT OPPORTUNITIES	
Project Overview (Aims & Outputs)	Project Updates
<p><u>What We Promised</u></p> <ul style="list-style-type: none"> • To raise Aspirations for 16-24yr within Bury West • Support actions to help get young people into work • Get young people/people ready and into work <p><u>What We Did</u></p> <ul style="list-style-type: none"> • Engaged with local businesses to sponsor and support employment programmes such as “Backing Young Bury” • Supported the Backing Young Bury Career and Skills Event 	<p><u>Successes to Date</u></p> <ul style="list-style-type: none"> • 2 young people from Radcliffe have been supported into employment in partnership with Backing Young Bury. 1 secured a 6 month paid work placement • Backing Young Bury has supported over 100 businesses to help them engage with apprenticeships • Backing Young Bury Careers and Skills event held in March 2014. Approx 532 young people attended the event. <p><u>Areas of Concern/Next Steps</u></p> <ul style="list-style-type: none"> • Continued support of “Backing Young Bury” programme • Promote Job Clubs and volunteering opportunities and try to get people back to work

IMPROVED COMMUNITY SAFETY

Project Overview (Aims & Objectives)	Project Updates
<p><u>What We Promised</u></p> <ul style="list-style-type: none"> • Continued support to the youth club at the ROC Centre • Continued support for the Friday night football scheme • Set up Partnership meetings to identify and deal with potential offenders • Make Radcliffe Safer (MRS) campaign • More school visits to address anti social behaviour (ASB) • To look at the possibility of setting up regular partnership meetings to identify and quickly deal with potential offenders • Invite the police to attend Township Forum Meeting <p><u>What We Did</u></p> <ul style="list-style-type: none"> • Supported the ROC centre to set up the youth club • Joint partnership work with the police to set up the MRS campaign • Supported the Be Safe Be Cool Initiative • Worked with Local Police Inspector and ASB team to establish partnership meeting to address ASB 	<p><u>Successes to Date</u></p> <ul style="list-style-type: none"> • ROC youth club still well attended • Football scheme still up and running, over 120 youths registered • Safe plating and property marking days set up • Dark night project leaflet distributed • Weekly police surgery held at the ROC Centre • Be Safe Be Cool Initiative delivered in during October 2013 • TF Co-ordinator attends monthly Bury South Partnership Action Group meetings to discuss individuals causing ASB • Police regularly attend Township forum meets to give updates on crime trends <p><u>Areas of Concern/Next Steps</u></p> <ul style="list-style-type: none"> • Continued support with the ROC Youth club • Continue with the MRS campaign • Continue to support the Be Safe Be Cool Initiative • Continue to attend monthly partnership meetings to address issues of ASB • Work with ASB Team on the Safe4Summer scheme targeting young people in Radcliffe

IMPROVED HEALTH & WELLBEING	
Project Overview (Aims & Objectives)	Project Updates
<p><u>What We Promised</u></p> <ul style="list-style-type: none"> • Joint working with Children’s Centres • To encourage more families to get active and take part in health related activities • Promote ‘ECO Toasty 2013’ a campaign to reduce fuel poverty and its affects • Support the Healthier Radcliffe Pilot • Support the Our Place Initiative <p><u>What We Did</u></p> <ul style="list-style-type: none"> • Regular visits to Children’s Centres to maintain good working relationships • Radcliffe residents informed of the ECO Toasty 2013 campaign via the Radcliffe database and press release • Healthier Radcliffe Pilot discussed at the Township forum • I Will if You Will Team attended the TF Forum • Submitted a bid for Our Place funding 	<p><u>Successes to Date</u></p> <ul style="list-style-type: none"> • Township Co-ordinator sits on the Advisory Groups for the Radcliffe Children’s Centres Cluster • TF Co-ordinator promoted the I Will If You Will project. Local initiatives taking place in Radcliffe • Extended GP opening hours across Radcliffe • Successful bid for Our Place Funding awarded £3000 <p><u>Areas of Concern/Next Steps</u></p> <ul style="list-style-type: none"> • Continued work with the Children’s Centres to tackle health inequalities • Work to reduce obesity levels in Radcliffe • Get Radcliffe active • Awaiting figures for the ‘ECO Toasty 2013’ campaign • Promote healthy eating across Radcliffe • Continued support of the Healthier Radcliffe project • Submit a development plan to bid for further Our Place Funding

IMPROVED EDUCATION ATTAINMENT/LEARNING	
Project Overview (Aims & Objectives)	Project Updates
<p><u>What We Promised</u></p> <ul style="list-style-type: none"> • Ensure children in Radcliffe are 'school ready' by supporting parents and encouraging reading from an early age • Promote learning opportunities for Radcliffe Residents and Businesses • Support for the Radcliffe Carnival <p><u>What We Did</u></p> <ul style="list-style-type: none"> • Sent out book start information to people registered on the TF database • Contacted TF Councillors and Advisory Group members to ask for a volunteer to represent Radcliffe on the Community Learning Partnership (CLP) • Joint venture between CLP and Radcliffe Carnival Committee 	<p><u>Successes to Date</u></p> <ul style="list-style-type: none"> • Reading materials have been distributed to the identified families in Radcliffe • Community Learning Partnership has been set up with Bury Adult Learning to develop a range of learning opportunities across the borough. Radcliffe Advisory Group member is a representative on the partnership • 10 week creative writing and craft workshops taking place to design floats for the carnival <p><u>Areas of Concern/Next Steps</u></p> <ul style="list-style-type: none"> • Continued work to ensure that the children living in Radcliffe are 'school ready' • Continued support of the Community Learning Partnership • Continued support for the Radcliffe Carnival

IMPROVED PUBLIC TRANSPORT LINKS	
Project Overview (Aims & Objectives)	Project Updates
<p><u>What We Promised</u></p> <ul style="list-style-type: none"> • To look at the lack of transport links from Ainsworth to the Tottington Health Centre • Promotion of the Safer School Parking Campaign • Implementation of the Streetsafe Initiative <p><u>What We Did</u></p> <ul style="list-style-type: none"> • Township Forum Advisory Group representative raised the issue with Transport for Greater Manchester via the Bury Rural Inequalities Forum (BRIF) • Disseminated information on the School Parking Campaign • Streetsafe (SS) initiative presented to the TF Forum 	<p><u>Successes to Date</u></p> <ul style="list-style-type: none"> • Ongoing work with Transport for Greater Manchester but not much progress being made at the moment • Red, amber and green advisory banners being displayed outside schools • Streetsafe 20mph zones implemented across areas of Radcliffe <p><u>Areas of Concern/Next Steps</u></p> <ul style="list-style-type: none"> • Monitor public transport issues • Parents still parking on the zigzag lines outside school in front of the banners • Work with Highways to identify further areas for the Streetsafe initiative

IMPROVED COMMUNITY PRIDE and BELONGING	
Project Overview (Aims & Objectives)	Project Updates
<p><u>What We Promised</u></p> <ul style="list-style-type: none"> • Active promotion of activities and groups in Radcliffe • Maintain and update the Radcliffe contact database • To encourage more young people to take part in community activities • Support Radcliffe Empty Properties initiative • Support for Parks Groups <p><u>What We Did</u></p> <ul style="list-style-type: none"> • Information shared with all members on the TF database • Advisory Group members update now a standard agenda item • 226 contacts currently on the Radcliffe database • Encouraged young people to get involved in community activities • Radcliffe Dig and open day posters distributed by TF Co-ordinator 	<p><u>Successes to Date</u></p> <ul style="list-style-type: none"> • Advisory Group Members actively involved in the Township forum. • All events have been shared with the Communication Team and members of the Township Forum • Empty property pilot embedded in the Township Area Plan • Community archaeological dig open day took place in Autumn 2013, involving schools, members of the public and Manchester University • Regular feedback to Township Forum <p><u>Areas of Concern/Next Steps</u></p> <ul style="list-style-type: none"> • Continuous promotion of the Radcliffe area • Further increase numbers on the database • Continued support of the empty properties pilot • Continued support of Community Groups

Summary of Township Forum in 2013-14

Area Plan

Over the past year, Radcliffe Township Forum produced a Township Plan, to identify priorities where, by working together with local councillors, community representatives, residents, local groups, and partner agencies, they can make a difference to improve life for all residents. The Township Plan includes an annual action plan that has been reported on at Township Forum meetings. This action plan includes the key projects and actions to be delivered over the coming year which contribute towards delivery of the over arching local priorities agreed by the Township Forum.

The Township Plans was developed through active engagement and discussions with Township Forum members - including both Councillors and Advisory Group members. 'Round table' discussions were held to provide an opportunity for wider community representatives, partner organisations and residents to get involved in agreeing local priorities. This will be repeated for 2014-15

Attendance

Radcliffe Township Forum figures for attendance are below.

Radcliffe	June 2013	July 2013	Sept 2013	Nov 2013	Jan/Feb 2014	March 2014	Average
	11	14	38	60	40	12	29

Advisory Group involvement:

Each Township Forum appoints Advisory Group members to contribute and speak on relevant issues. They help to improve the range of knowledge and expertise on the Township Forum and provide an inclusive approach to improving the outcomes for each area. In particular, they champion or lead projects within Township Plans.

Presentations / Consultation with Township forums

The value of the Township Forums is recognised in major public consultation exercises. During 2013/14 this has included:

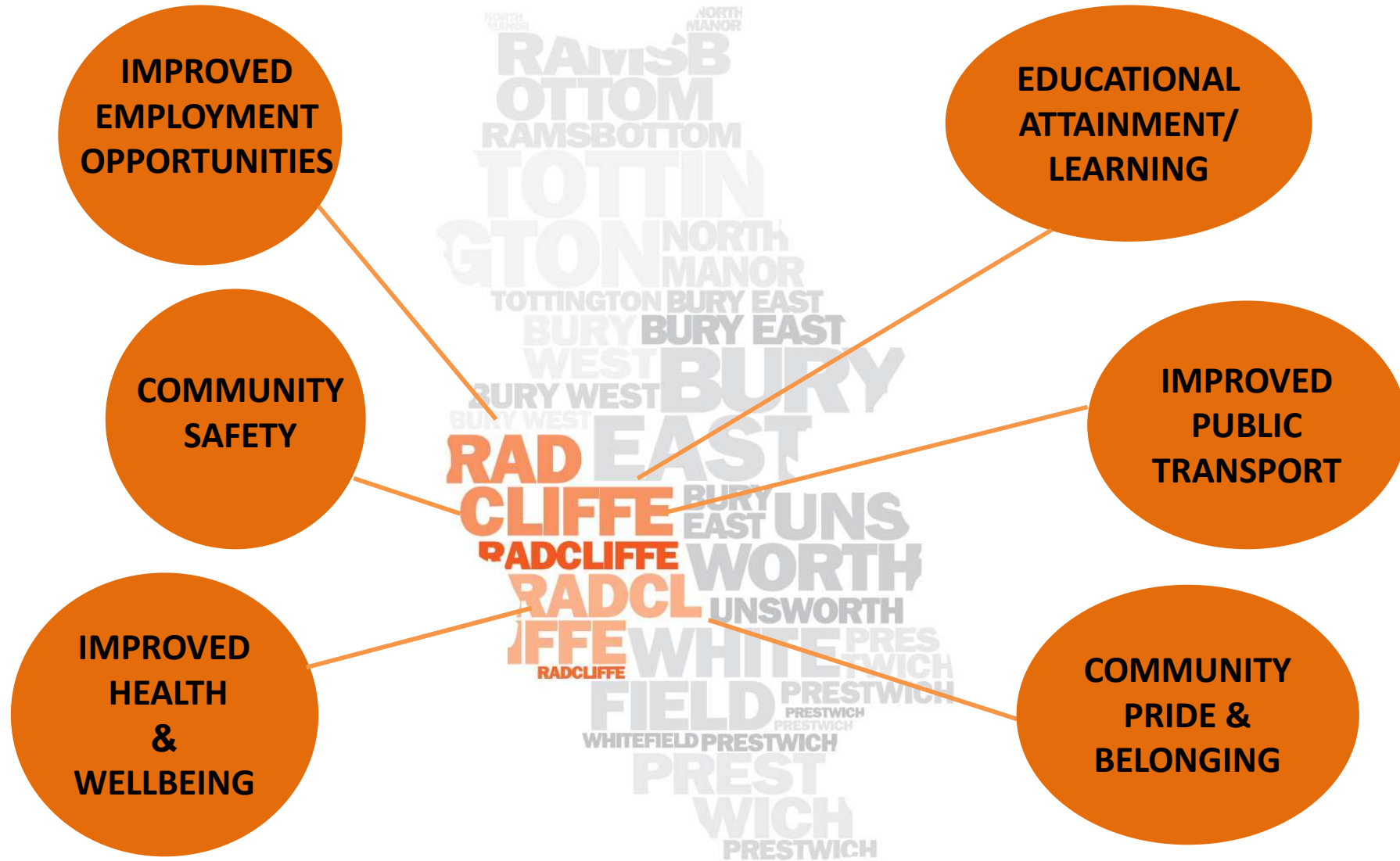
- Plan for Change 3
- Radcliffe Pilot
- Bury Core Strategy
- Bury Carer's Centre
- Local Flood Risk Management Strategy
- Joint Drug and Alcohol Strategy
- I Will If You Will
- Fostering Team
- Healthier Together
- Joint Strategic Needs Assessment

Community Fund

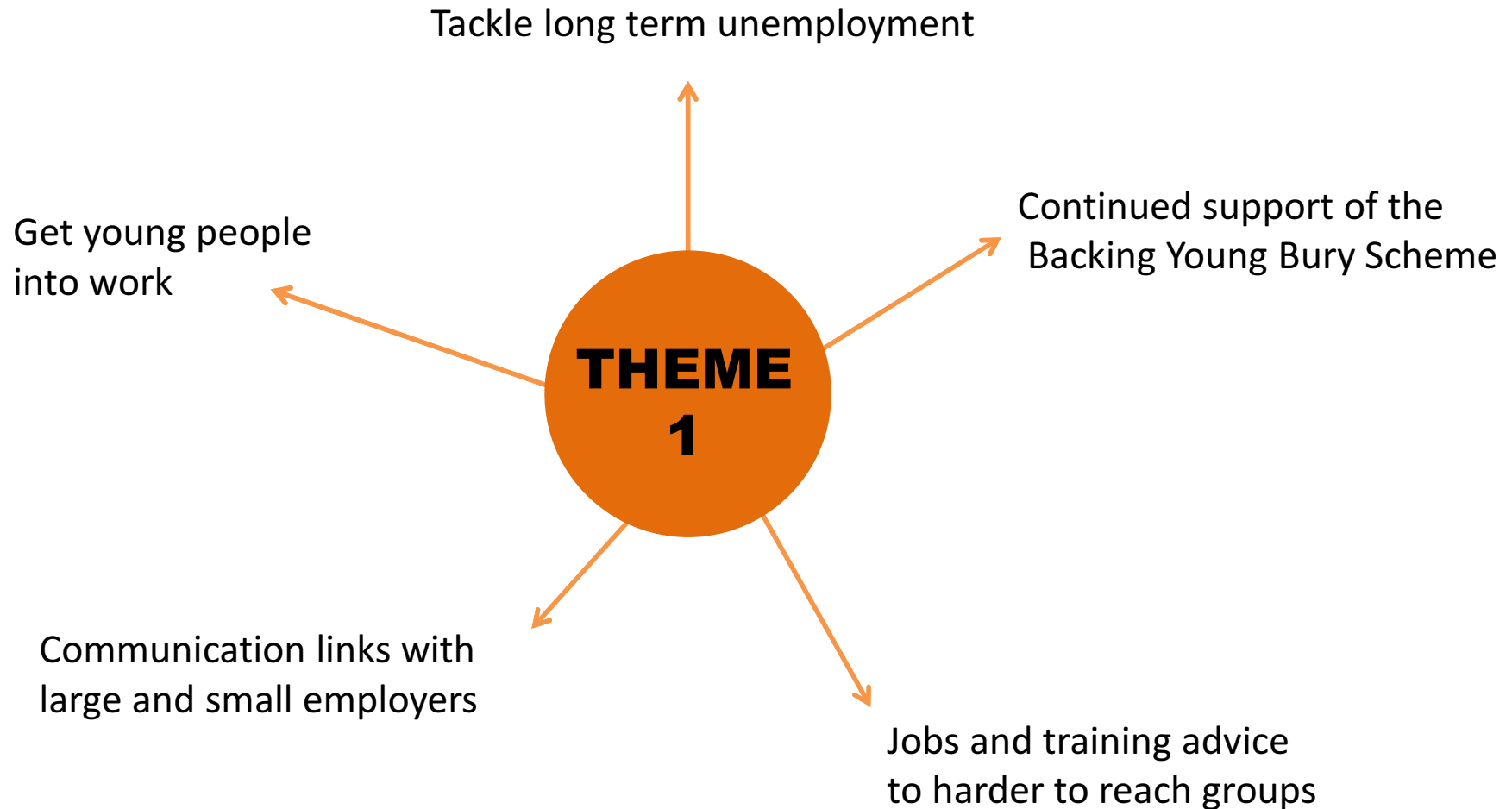
The Council continues to allocate £1,000 per ward each year to support the work of voluntary and community groups. Individual grants to the 'ward fund' are available for a maximum of £250. Additionally, a borough-wide allocation of £13,000 is available for 'cross-ward' applications from third sector organisations, with a maximum individual grant of £750. Small grants funds are also available for grants of up to £12,000.

This page is intentionally left blank

REVITALISING RADCLIFFE TOWNSHIP PLAN



IMPROVED EMPLOYMENT OPPORTUNITIES

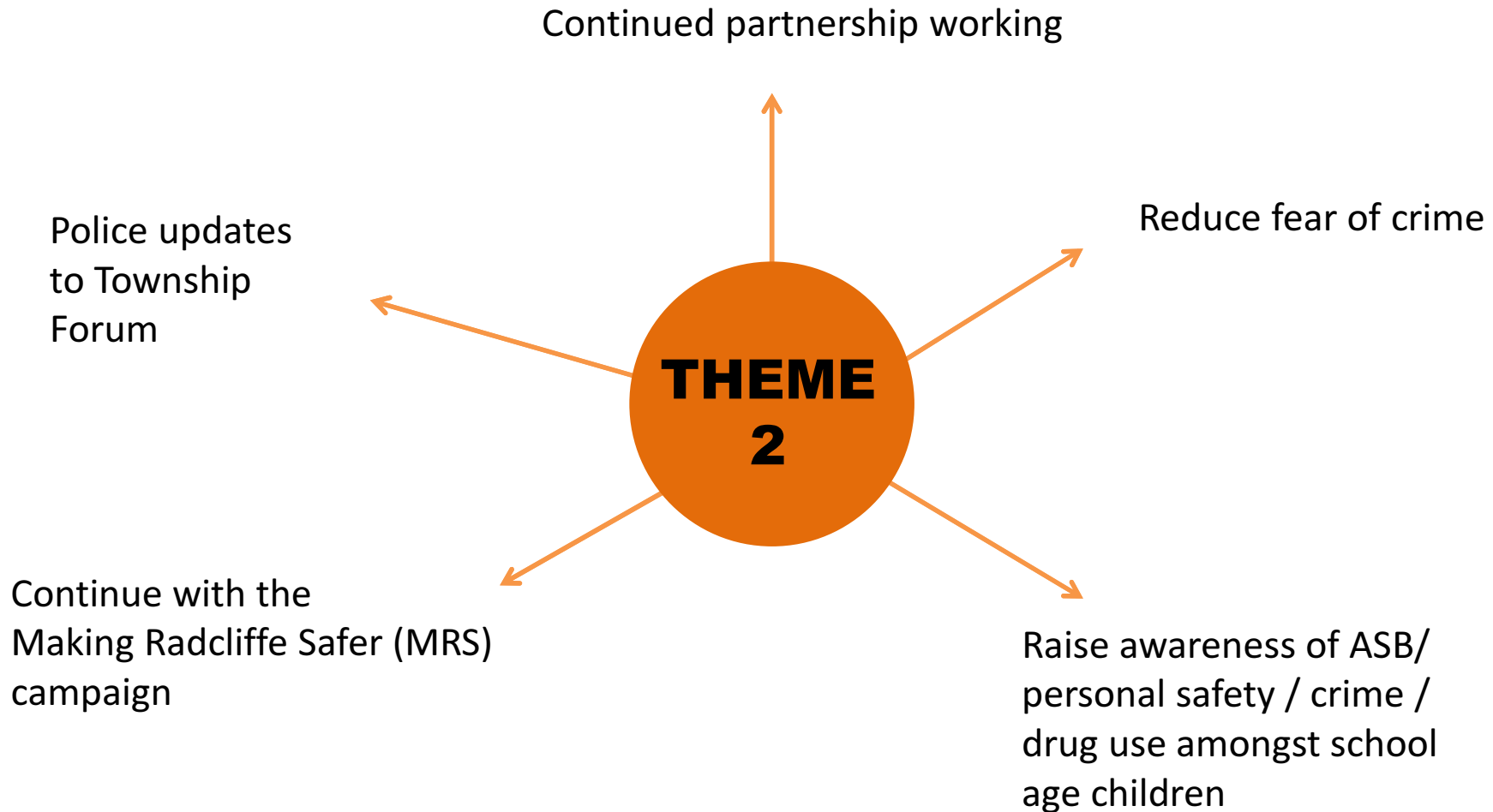


IMPROVED EMPLOYMENT OPPORTUNITIES

SUCCESS STORIES 2013-14

- Radcliffe Works to date have managed to get more than 174 young people into employment
- Weekly Job Club held at Coronation Road Children's Centre
- Backing Young Bury Careers and Skills event held in March 2014. Approx 532 young people attended this event
- As part of the Connecting Provision Trainees, 2 trainees from Radcliffe successfully completed the initial 6 week placement and 1 went on to secure a 6 month paid placement with Bury Council

COMMUNITY SAFETY



COMMUNITY SAFETY

SUCCESS STORIES 2013-14

- Successful delivery of Be Safe Be Cool project in October 2013 delivering messages on personal safety, crime, consequences of crime, anti social behaviour, peer pressure and affects of drugs and alcohol
- Weekly Community Police Surgery held at the ROC Centre
- Regular Police updates to the Township Forum
- Safe Plating and property marking days set up
- Dark Night leaflets distributed
- Township Co-ordinator attends monthly Bury South Partnership Action Group meetings to discuss individuals causing ASB

IMPROVED HEALTH AND WELLBEING

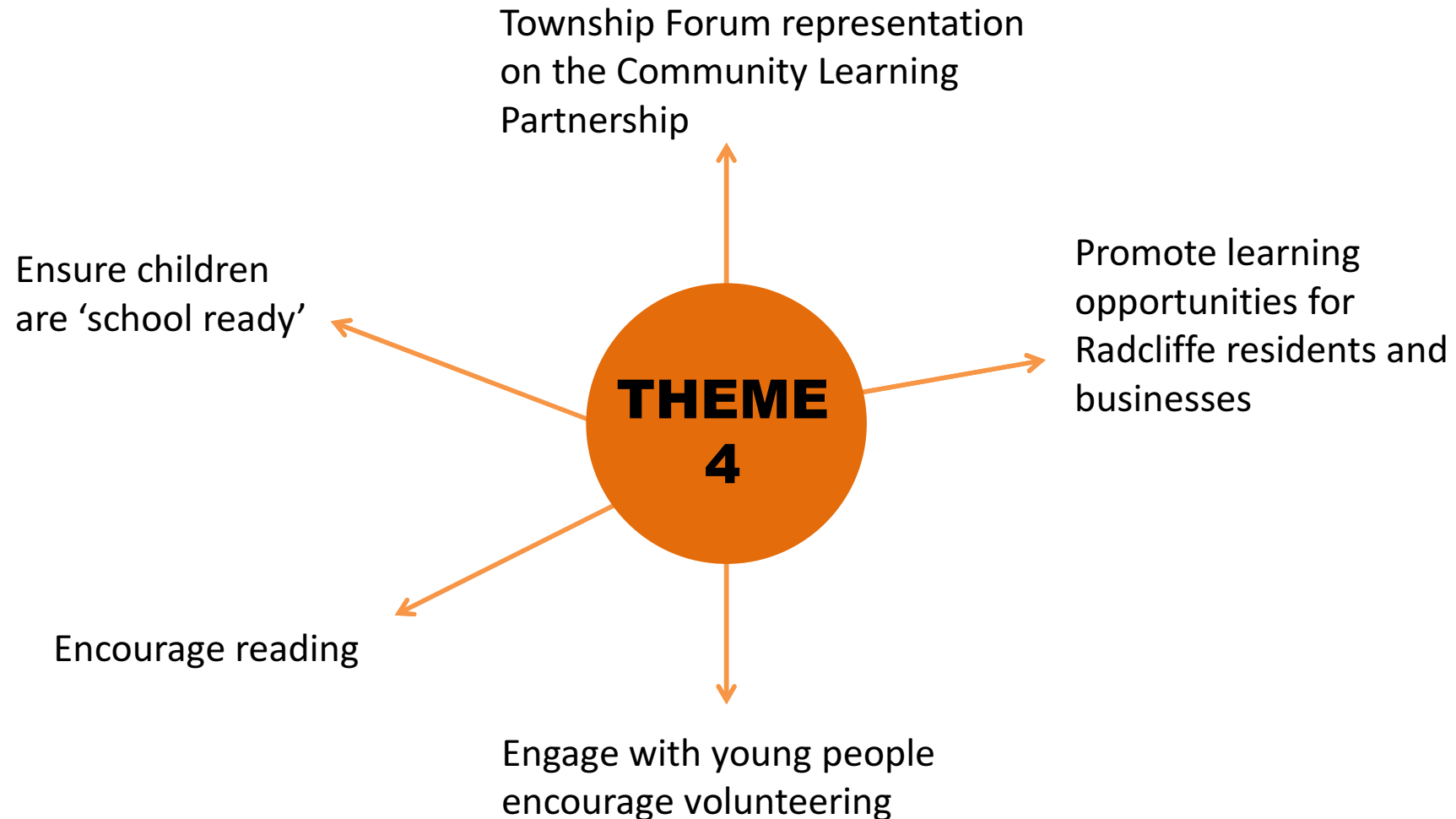


IMPROVED HEALTH AND WELLBEING

SUCCESS STORIES 2013-14

- Extended GP opening hours across Radcliffe
- Successful Our Place bid submitted and awarded £3,000. Consultation event held on 28th May 2014. Further bid for £17,000 submitted (awaiting outcome)
- Township Co-ordinator sits on the Advisory Groups for the Radcliffe Children's Centres Cluster addressing health inequalities
- ECO Toasty Campaign 2013 promoted across Radcliffe to raise awareness of fuel poverty.
- Training and educational opportunities re health and first aid delivered at the Children's Centers
- Radcliffe Township Forum supporting the I Will If You Will project with activities being delivered across Radcliffe
- Fruit and vegetable scheme being launched via the Children's Centre

EDUCATIONAL ATTAINMENT / LEARNING

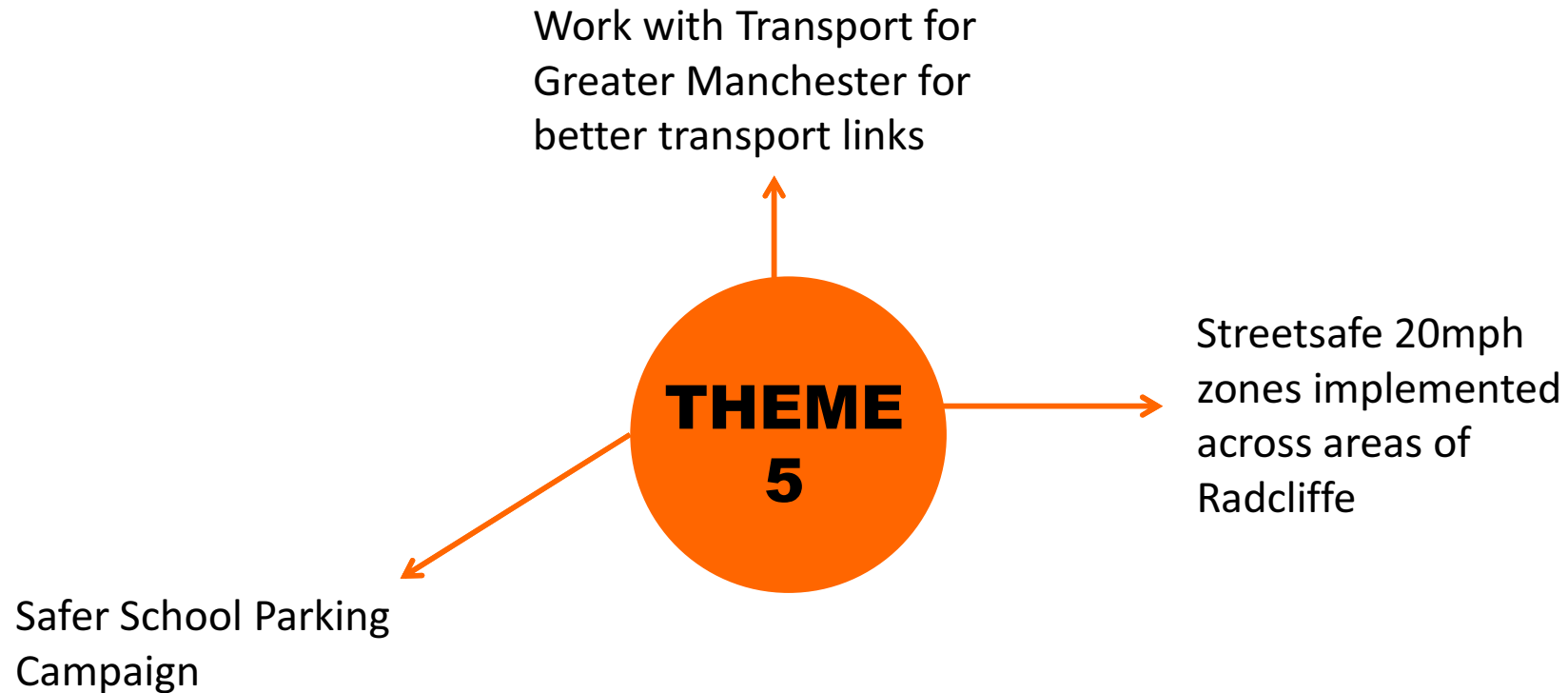


EDUCATIONAL ATTAINMENT / LEARNING

SUCCESS STORIES 2013-14

- Reading materials have been distributed to the identified families in Radcliffe
- Accredited reading course delivered to parents at the Radcliffe Children's Centre's
- Radcliffe Advisory Group Member sits on the Community Learning Partnership
- 10 week creative writing and craft workshops delivered to support the Radcliffe carnival.

IMPROVED PUBLIC TRANSPORT LINKS / ROAD SAFETY

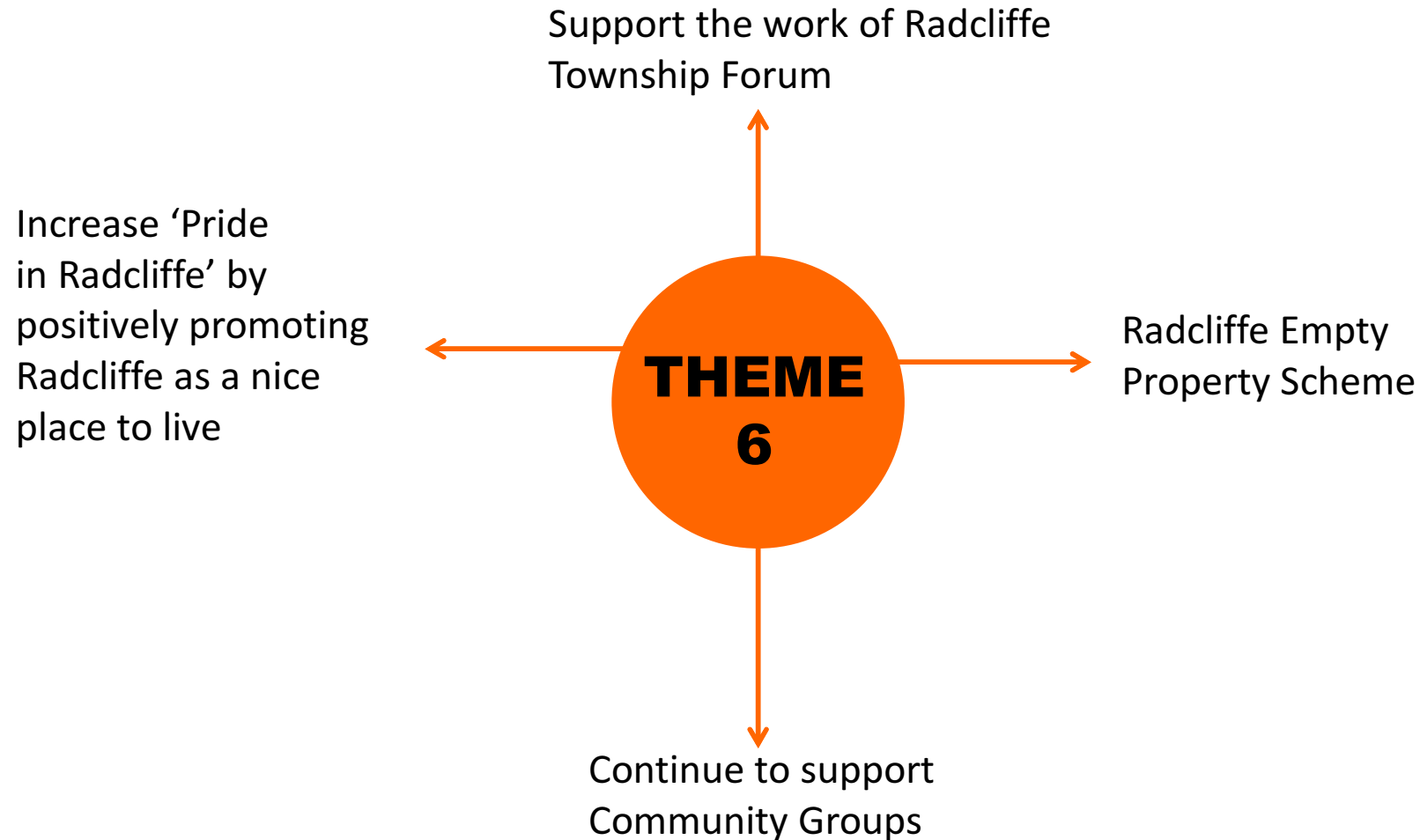


IMPROVED PUBLIC TRANSPORT LINKS / ROAD SAFETY

SUCCESS STORIES 2013-14

- Improved transport links discussed with Transport for Greater Manchester at the BRIF (Bury Rural Inequalities meeting)
- Proposals on the Streetsafe Initiative, 20mph zones across Radcliffe are currently being consulted on. Closing dates for comments is 7th July 2014
- Safer School Parking Charter launched, use of red, green and amber banners to persuade responsible driving and parking around schools

COMMUNITY PRIDE & BELONGING

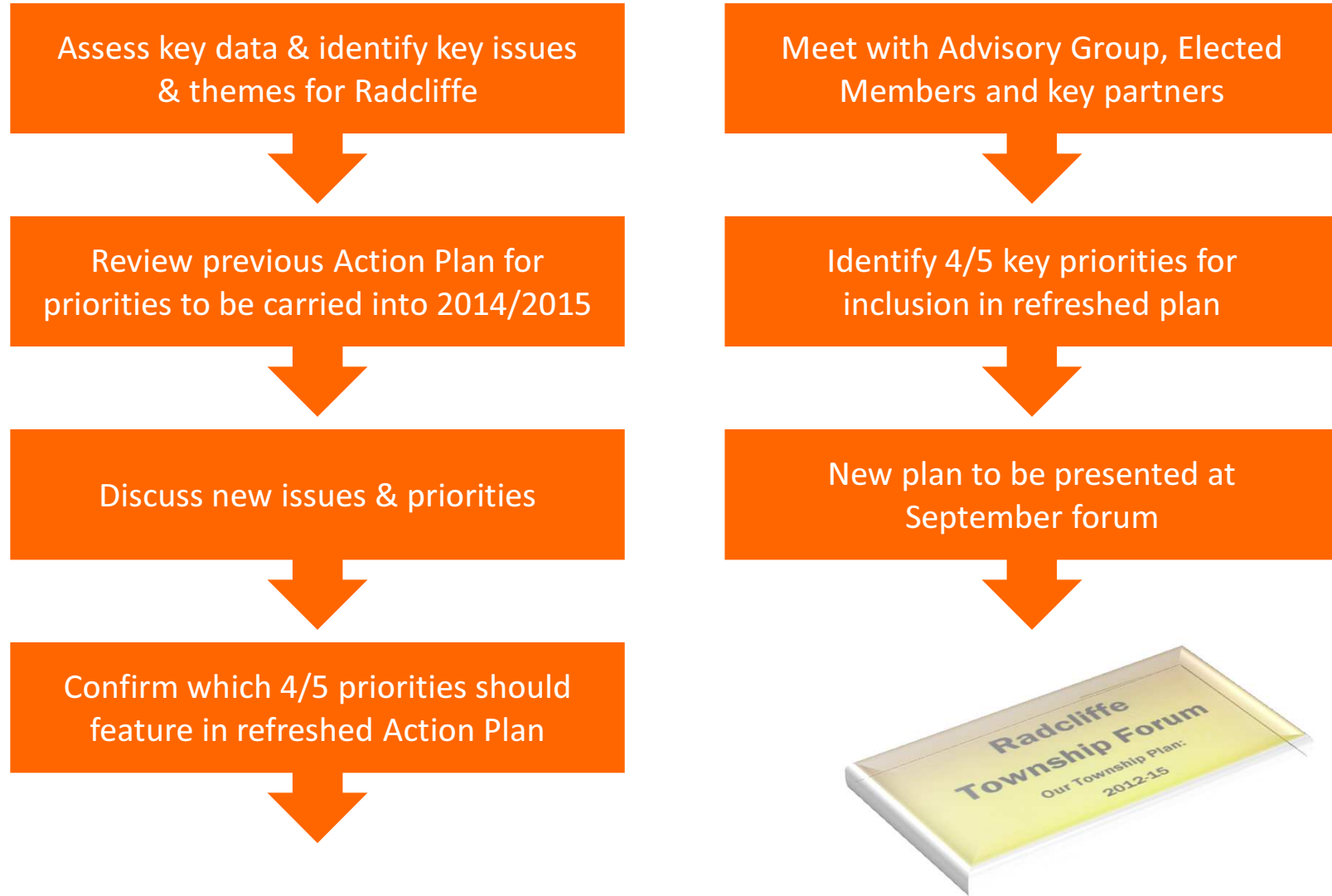


COMMUNITY PRIDE & BELONGING

SUCCESS STORIES 2013-14

- Radcliffe Advisory Group Members actively involved in the Township forum
- All events have been shared with the Communication Team and members of the Township Forum
- Empty property pilot embedded in the Township Area Plan
- Community archaeological dig open day took place in Autumn 2013, involving schools, members of the public and Manchester University
- Regular feedback from Advisory Members to Township Forum

NEXT STEPS



Thank you

For taking part in revitalising your Township Plan
Your input is invaluable to ensure key priorities
are identified & addressed

This page is intentionally left blank

Title:	Community Funding Report
To:	Radcliffe Township Forum
Date:	1 st July 2014
Contact Officer	Liz Saunders Bury Council Programme Support Manager 0161 253 6357 e.saunders@bury.gov.uk

1.0 Introduction

The Council has allocated £1,000 per ward to support the work of voluntary and community groups. The application funding decisions will be made by the relevant ward councillors. Individual grants to the **"ward fund"** are available for a maximum of £250. Additionally, a borough-wide allocation of £13,000 is available for **"cross-ward"** applications from third sector organisations, with a maximum individual grant of £750.

2.0 Ward Funding 2014/15

Radcliffe East

<i>Group</i>	<i>Details</i>	<i>Allocated</i>
1005 Squadron ATC	Brass bands & hire of civic centre	£ 236.66
Radcliffe Town FC	First aid kit, trophies, venue hire	£ 250.00
Radcliffe Borough Comm Trust	Quick cricket equipment, footballs and bibs.	£ 250.00
Radcliffe Self Mngd Allotments	Weed membrane, stone and labour	£ 250.00
Fund Remaining		£ 580.01

Radcliffe North

<i>Group</i>	<i>Details</i>	<i>Allocated</i>
1005 Squadron ATC	Brass bands & hire of civic centre	£ 236.66
Radcliffe Town FC	First aid kit, trophies, venue hire	£ 250.00
Radcliffe Self Mngd Allotments	Weed membrane, stone and labour	£ 250.00
Fund Remaining		£ 830.01

Radcliffe West

<i>Group</i>	<i>Details</i>	<i>Allocated</i>
1005 Squadron ATC	Brass bands & hire of civic centre	£ 236.66
Radcliffe Town FC	First aid kit, trophies, venue hire	£ 250.00
Radcliffe Borough Comm Trust	Quick cricket equipment, footballs and bibs,	£ 250.00
Radcliffe Self Mngd Allotments	Weed membrane, stone and labour	£ 250.00
Fund Remaining		£ 580.01

3.0 Cross Ward Funding 2014/15

<i>Group</i>	<i>Details</i>	<i>Allocated</i>
PUPILS	'Encourage independent living' trip	£ 750.00
Bury Dragons Diving Club	Diving Event	£ 750.00
Hard of Hearing	Tutor classes	£ 750.00
The Enterprise Centre	Purchase stone & hire of tractor & labour	£ 500.00
Unsworth South Social Club	Signage and posters	£ 722.86
Bury District Angling Society	Plywood sheets & roofing sheets	£ 250.00
23 rd Prestwich & Whitefield	Tents, benches, pans & utensils	£ 750.00
Bury Society for Blind	Develop a sensory garden	£ 703.06
Fund Remaining		£ 7,824.08

4.0 Small Grants Panel 2014/15

Bury Council has an annual allocation of £37,800 for the Small Grant's Fund. The current funding priority is to encourage and support grass-root community activity. This means small, community-based and locally controlled groups that manage themselves, encourage active participation from volunteers, and have minimal cash reserves and limited access to funding support.

The next round of funding for this financial year closes on 2nd September and the Panel will meet on 23rd September. Application forms for the new round of funding are available from Liz Saunders 0161 253 6357 or e.saunders@bury.gov.uk

The small grants panel met on the 23rd June to approve applications. Details of approvals will follow.

Community First Fund – Cabinet Office Funding

The fund, **Community First** aims to help groups improve their area and is intended to maximize community involvement in the process whilst expecting neighbourhood groups to match funds with either money or time. The four eligible wards (East, Moorside, Radcliffe East and Radcliffe West) have set up Panels consisting of members of the community whose principal role is to identify local priorities for funding and make recommendations relating to projects to be supported. B3SDA is the panel partner. The Panel met on 26th April to approve the following applications. Anyone wanting any further information about this fund can email the panel at the addresses detailed below. A further round of funding is available for each of the areas for the financial year 2014/15. Application form are available from www.B3SDA.org.uk or can be requested from the email addresses below.

Radcliffe East Panel - radcliffeeast.bury@yahoo.co.uk

Organisation	Activity	Allocated
Radcliffe Athletic Club (Yr 1 £)	Athletics club	£1,595.00
Friends of Close Park (Yr 1 £)	Gardening project and growing own food	£2,325.00
Withins Community Association (Yr 1 £)	Enhancing resident areas	£1,700.00
The Conservation Volunteers	Gardening and food growing	£1,800.00
Making Space	Development of pop-up cafes	£1,103.00
Shared Roots	Up skilling people to enable communities to cope	£2,200.00
Radcliffe Townswomens Guild	Contribution to cost of a holiday break for Guild	£250.00
Cartwheel Art	Creative Writing	£2,500.00
		£13,573.00

Radcliffe West Panel -radcliffewest.bury@yahoo.co.uk

Organisation	Activity	Allocated
Radcliffe Town FC (Yr 1 £)	Modernise and improve the facilities of the building - replacing old kitchen area, decorating the interior	£1,700.00
Radcliffe Girls and Boys Club (Yr 1 £)	The continuation of youth provision for young people two nights per week	£1,000.00
Radcliffe Carnival (Yr 1 £)	To establish a base to recreate the annual Radcliffe Carnival	£750.00
Bolton Road TRA (Yr 1 £)	To offer chair based exercise to vulnerable people	£266.00
Radcliffe Boys & Girls Club	Improve health and hygiene of coffee bar, deliver cooking skills	£1,500.00
Rad boro Rounders Club	Rounders players Kit	£250.00
Early Break	Street based assertive outreach service for young people	£1,000.00
Radcliffe Scouts	Oven for lodge @campsite Giant Seat Scout & Community Campsite	£1,000.00
Making Space	Development of pop-up cafes	£1,100.00
Radcliffe Carnival	Carnival	£1,536.00
Christians Against Poverty	To help manage more clients	£2,500.00
St Phillips Community Centre	Windows, doors and toilet maintenance	£1,500.00
		£14,102.00